

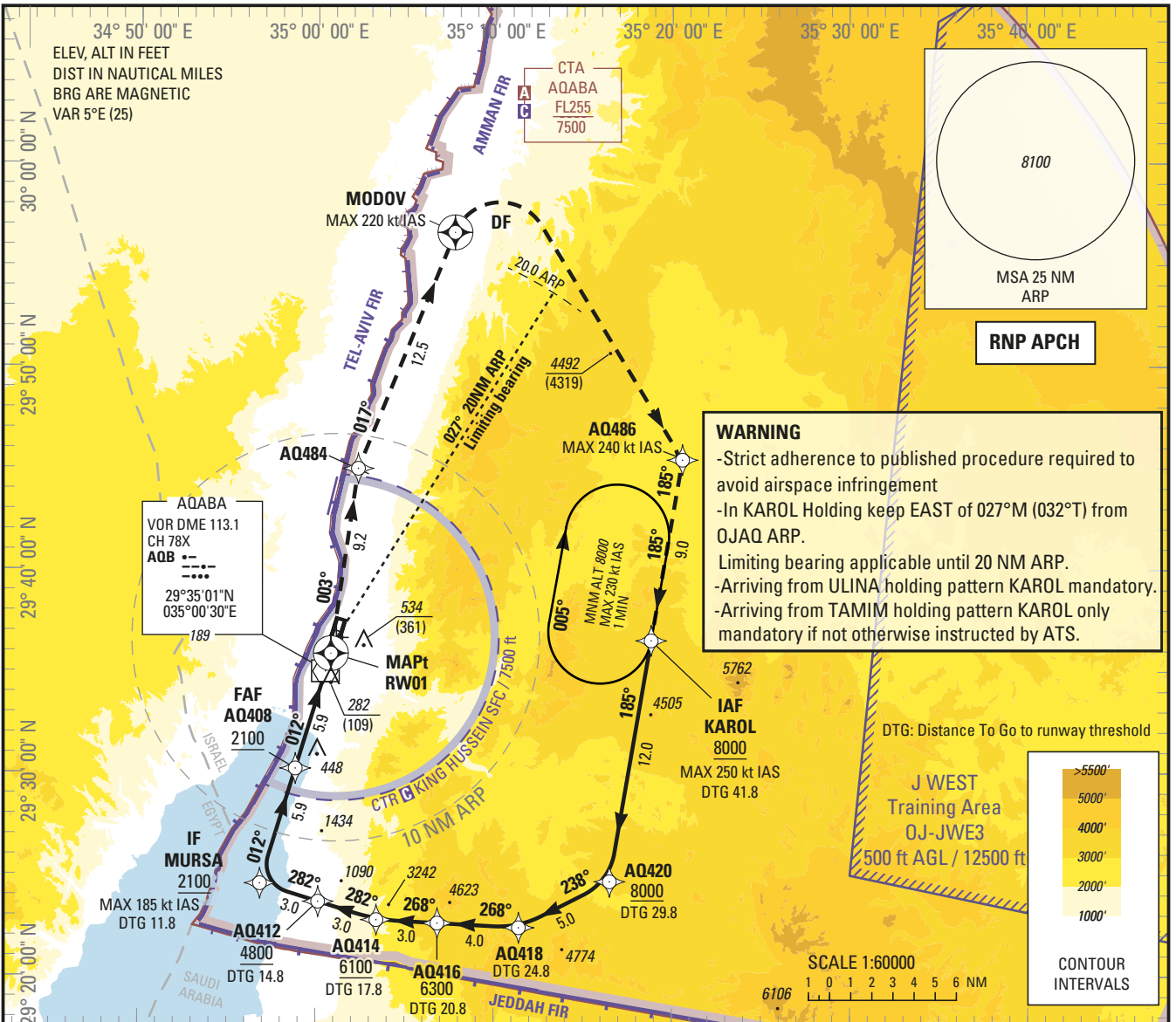
**INSTRUMENT  
APPROACH  
CHART — ICAO**

**AERODROME ELEV 173 ft**  
HEIGHTS RELATED TO  
THR RWY 01 — ELEV 173 ft

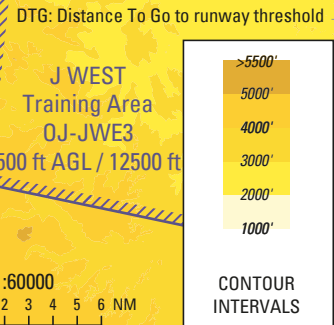
**AQABA/King Hussein Intl. (OJAQ)**

King Hussein Tower 119.2  
Aqaba Sector 132.425

**RNP Y RWY 01**

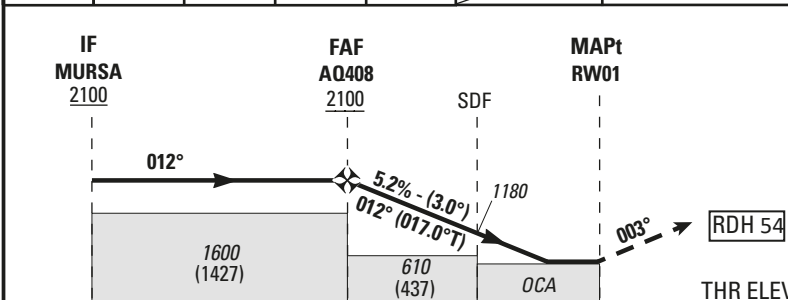


**WARNING**  
-Strict adherence to published procedure required to avoid airspace infringement  
-In KAROL Holding keep EAST of 027°M (032°T) from OJAQ ARP.  
Limiting bearing applicable until 20 NM ARP.  
-Arriving from ULINA holding pattern KAROL mandatory.  
-Arriving from TAMIM holding pattern KAROL only mandatory if not otherwise instructed by ATS.



5	4	3	2	1	RW01	NM FAF to THR
1810	1490	1180	860	540		ALTITUDE

TRANSITION ALTITUDE 13000  
TRANSITION LEVEL FL 150



**MISSED APPROACH:**  
Climb on course 003°M to AQ484, then MODOV on course 017°M (MAX 220 kt IAS), then turn right direct to AQ486 (MAX 240 kt IAS), then KAROL (MAX 250 kt IAS) climbing to 8000 (7827) and hold or follow ATC instructions.

5.9	5.9	3.0	0		NM to NEXT WP (NM)
11.8	5.9	3.0	0		NM to THR RWY 01

(1) OCA (H)	A	B	C	D	GS	kt	70	85	100	115	130	145	160	185
LNAV 2.5%	1290 (1110)	1310 (1140)	1340 (1160)	1360 (1180)										
LNAV 3.0%	530 (360)	530 (360)	530 (360)	540 (370)	FAF-MAPt 5.9 NM	min:s	5:04	4:10	3:32	3:05	2:43	2:27	2:13	1:55
CIRCLING	NOT AUTHORIZED				Rate of Descent	ft/min	370	450	530	610	690	770	850	980

CHANGE: MISSED APP TEXT & RDH



**Holding instruction**

Path Descriptor	Waypoint Identifier	Inbound Course °M (°T)	Leg Distance	Turn direction	Minimum Altitude (ft/FL)	Maximum Altitude (ft/FL)	Speed Limit (kt)	Magnetic Variation	Navigation Specification
Hold	KAROL	185 (190.0)	1 min	R	8000	14000	230	+5.0	RNP 1

**Route Description: IAC RNP Y RWY01**

RNP Y RWY01											
Serial Number	Path Descriptor	Waypoint Identifier	Fly - Over	Course °M (°T)	Magnetic Variation	Distance (NM)	Turn direction	Altitude (ft/FL)	MAX IAS (kt)	VPA/TCH (°/ft)	Navigation Accuracy (NM)
10	IF	KAROL	-	-	-	-	-	+8000	-250	-	RNP APCH
20	HF	KAROL	Y	185 (190.0)	+5.0	-	R	+8000	-230	-	RNP APCH
30	TF	AQ420	-	185 (189.7)	+5.0	12.0	-	+8000	-	-	RNP APCH
40	TF	AQ418	-	238 (243.0)	+5.0	5.0	-	-	-	-	RNP APCH
50	TF	AQ416	-	268 (273.1)	+5.0	4.0	-	+6300	-	-	RNP APCH
60	TF	AQ414	-	268 (273.0)	+5.0	3.0	-	+6100	-	-	RNP APCH
70	TF	AQ412	-	282 (287.3)	+5.0	3.0	-	+4800	-	-	RNP APCH
80	TF	MURSA	-	282 (287.3)	+5.0	3.0	-	+2100	-185	-	RNP APCH
90	TF	AQ408	-	012 (017.0)	+5.0	5.9	-	+2100	-	-	RNP APCH
100	TF	RW01	Y	012 (017.0)	+5.0	5.9	-	@221	-	-3.0/ 54	RNP APCH
110	CF	AQ484	-	003 (008.2)	+5.0	9.2	-	-	-	-	RNP APCH
120	CF	MODOV	Y	017 (022.1)	+5.0	12.5	-	-	-220	-	RNP APCH
130	DF	AQ486	-	-	-	-	R	-	-240	-	RNP APCH
140	TF	KAROL	-	185 (189.7)	+5.0	9.0	-	+8000	-250	-	RNP APCH

**Aeronautical Data Tabulation: IAC RNP Y RWY 01**

<b>WAYPOINT LIST</b>		
<b>Waypoint / Fix</b>	<b>Latitude</b>	<b>Longitude</b>
KAROL	29°36'32.564"N	035°18'49.354"E
AQ420	29°24'41.101"N	035°16'30.258"E
AQ418	29°22'24.660"N	035°11'24.205"E
AQ416	29°22'37.448"N	035°06'49.897"E
AQ414	29°22'46.936"N	035°03'24.154"E
AQ412	29°23'40.603"N	035°00'07.431"E
MURSA	29°24'34.077"N	034°56'51.061"E
AQ408	29°30'13.514"N	034°58'49.395"E
RW01	29°35'53.005"N	035°00'47.980"E
AQ484	29°44'59.158"N	035°02'17.945"E
MODOV	29°56'36.761"N	035°07'43.131"E
AQ486	29°45'26.121"N	035°20'34.032"E